

Places to Discover Guide Charleston in January

Philadelphia Alley

Charleston is full of picturesque alleyways but Philadelphia Alley may take the cake. Perfect to snap an Instagram worthy photo or a cute selfie!

Directions from Hotel



Hutson Alley

String lights, cobblestone & ivy filled buildings line this alleyway along with a variety of bars & restaurants. The perfect alley to easily bar hop (or appetizer hop!) while also feeling you're far away in a quaint European city

Directions from Hotel

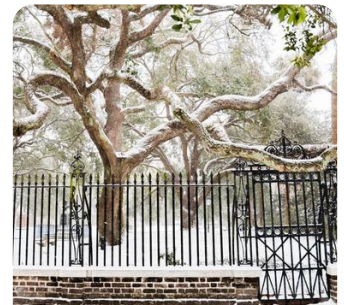


Washington Square

Washington Square

The park, with its mature canopy of live oaks, is the perfect place to sit and enjoy a quiet moment. It is one of the more manicured parks, with floral displays changed throughout the year and over-seeded lawn in the winter months. The ironwork and architectural features make this park a must-see when walking the streets of Charleston.

Directions from Hotel

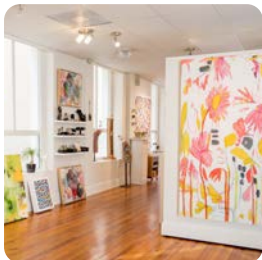


Miller Gallery

Established in 2017, Miller Gallery is a Charleston-based contemporary art gallery run by women, featuring artwork by local and international artists. Focusing on emerging and mid-career artists working in various mediums, we celebrate providing a welcoming environment for collectors to experience, appreciate, and acquire artwork

by living artists.

Directions from Hotel



Must Eat or Drink Stops

- Kudu Coffee & Craft Beer
- Stella's
- babas on canon
- Jeni's Splendid Ice Cream
- Uncork
- Callie's Hot Little Biscuit
- City Lights Coffee
- Bin 152
- Harken Cafe
- Brown Dog Deli

Pineapple Fountain

Quintessential Charleston, a stop at the Pineapple Fountain at Waterfront Park is a must. Catch the pineapple early in the morning for a more empty photo op. Sunset is also a wonderful time to visit.

Directions from Hotel



Unitarian Church in Charleston

It is the oldest Unitarian church in the South and the second oldest church building on the peninsula of Charleston. Not only is the inside of the church beautiful and often times open for the public to view, the gardens and cemetery next to the church is beautiful as well.

Directions from Hotel

